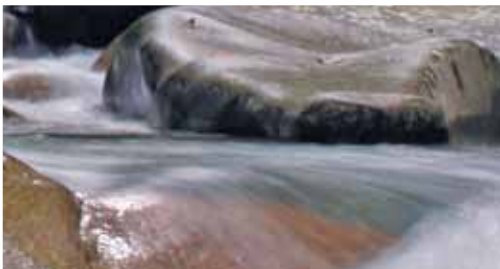
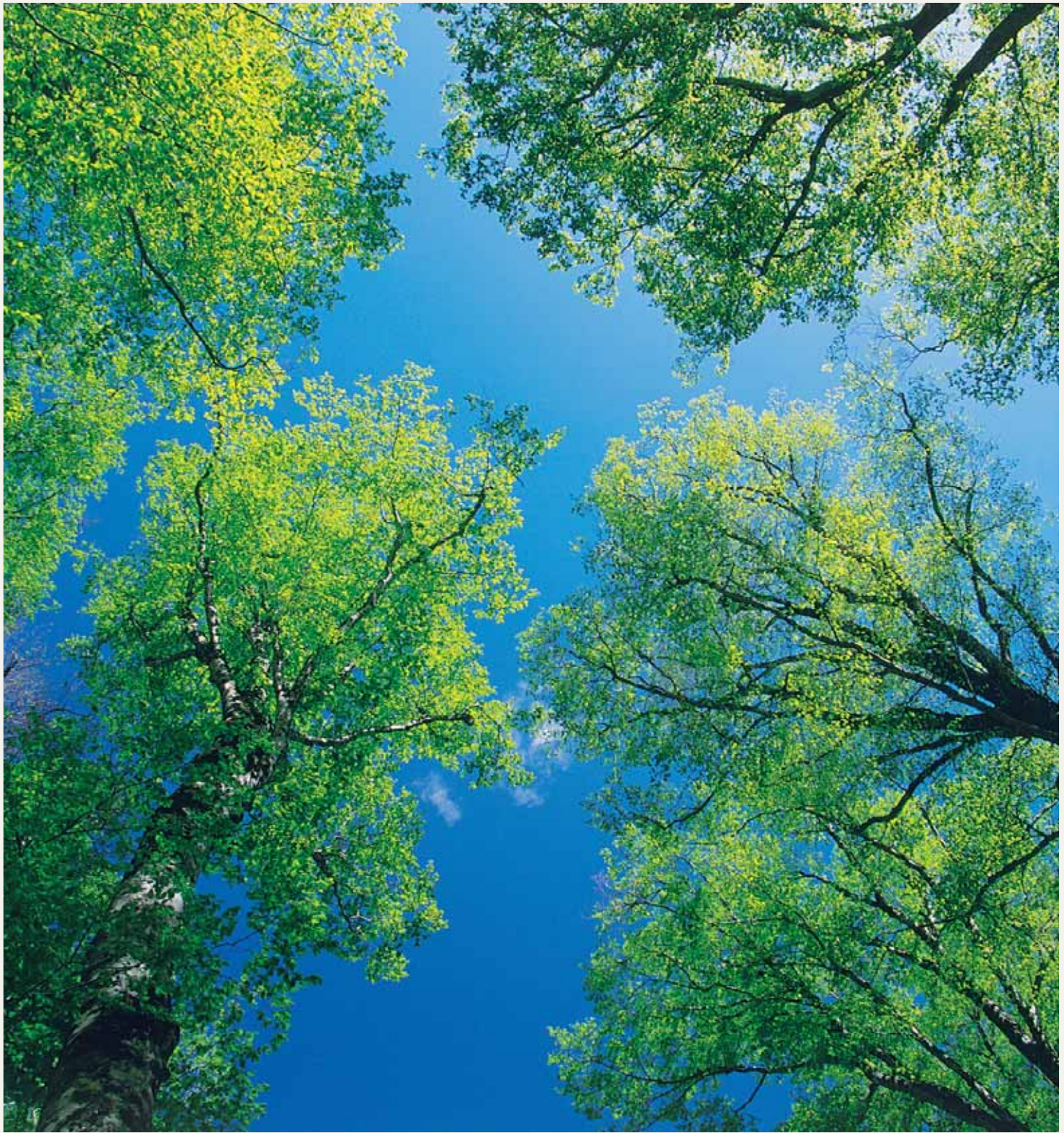


**TRANSFORMING ENVIRONMENTAL,
SOCIAL AND SAFETY EXPENDITURE
INTO INVESTMENT**





OUR VISION

Global specialists solving emerging challenges to improve the lives of communities.

OUR PROMISE

We share your challenge and passionately deliver smarter solutions.

ABOUT US

COFFEY ENVIRONMENTS

Coffey Environments provides environmental, social, workplace health and safety, and environmental engineering services around the world.

We have offices in the major cities of Australia, New Zealand and United Arab Emirates.

PART OF A LEADING GLOBAL PROFESSIONAL SERVICES CONSULTANCY

Coffey International Limited is a global professional services consultancy focusing on both physical and social infrastructure. We are listed on the Australian Securities Exchange (ASX:COF) and have been operating for over 50 years.

We offer a range of specialist services across the full lifecycle of projects, from concept to completion. Our services range from planning and financing the project, through to development and resolving technical challenges to the management of resources, timelines and budgets. We also use our specialist knowledge to ensure the long term maintenance of this infrastructure.

We have over 3,000 people helping clients on projects in more than 80 countries, with permanent offices throughout the Americas, Africa, Asia Pacific, Europe and the Middle East. As specialists, all of our people have one thing in common: a passion to solve emerging challenges to improve the lives of communities.

PROJECT LIFE CYCLE SERVICES

Each stage of a project's life brings its own issues, levels of public interest and political attention; each project type brings its own drivers and idiosyncrasies; and each project phase and location brings its own combination of technical and social risks to be identified, investigated and managed.

Coffey Environments provides technical and advisory services covering the environmental, social and workplace health and safety issues of a project life cycle - from conception through planning, design, approvals, financing, construction, operations, monitoring and compliance, closure, decommissioning and site rehabilitation.

We share the challenges of our clients at every stage of the project lifecycle.





OUR SERVICES

Corporate Services

Coffey Environments' corporate services assist in the development of strategy for long-term environmental, social and safety performance across the project lifecycle.

Our environmental and social due diligence reviews and audits support the environmental and social responsibilities of project operators, financiers, insurers, purchasers, investors and regulators in the mining, smelting, oil and gas, property, public infrastructure and manufacturing sectors.

Reviews and audits focus on hazards, risks, the quantum of potential liabilities and remedial options. They may also take account of stakeholder views and intangible factors such as the culture of operators and regulators, host society customs and jurisdictional risks.

Planning and Approvals

Approval for most new projects is based on a formalised and public process of environmental and social impact assessment. The process is open-sided (anyone can join in) and open-ended (a project may be approved, approved with changes or rejected), and most new projects must work through increasingly demanding and diverse stakeholder attendance.

Everything in the approvals process that matters to a proponent—a focused scope of work, a timely assessment, a sound decision and an appropriate set of conditions if approved—requires a decision of government, and it is stakeholders who determine the climate, in which these decisions are made. It is therefore in a proponent's interests to inform their project stakeholders, attend to their requests and suggestions and make a clear statement of their views and the interests affected, for better or worse, by the development proposal.

Coffey Environments' services include the following capabilities:

- Environmental and Social Impact Assessment (ESIA)—issue identification and stakeholder strategy; negotiation of project-specific terms of reference; environmental planning and the comparison of options; project optimisation and impact assessment; preparation of impact statements; negotiation of approval conditions, compliance criteria and monitoring programs
- Technical characterisation of marine and terrestrial environments: earth and water sciences, chemistry, toxicology ecology, land use and special features, processes and risks
- Modelling and visualisation
- Flora and fauna monitoring and assessment
- Project approvals and permit conditions
- Closure planning—stakeholder issues and strategy; closure reference points, interpretation of conditions; issues and options; stakeholder consultation; design; cost; schedules; negotiation with agencies over end-use objectives, bonds; and residual liabilities and remedial options
- Lease relinquishment criteria and conditions
- Monitoring.



OUR SERVICES

Social Performance

Businesses and projects operate in an increasingly engaged, inquiring and often difficult social context. Financial institutions, governments, joint venture participants and host communities are more and more sensitive to the risks of community dissatisfaction, misalignment of development goals, impacts on indigenous communities, degradation of community cohesion, human rights violations, local economic grievances and unmet expectations.

An organisation's ability to understand and conduct relationships with its stakeholders is therefore integral to company policy, executive decisions, day-to-day operations and, in the longer term, corporate reputation.

Coffey Environments' services include the following capabilities:

- Socio-economic baseline characterisation
- Stakeholder research and analysis
- Social impact assessment
- Community development and capacity building
- Community investment strategy
- Stakeholder engagement and community consultation
- Reputation management and crisis communication
- Social performance strategy, implementation, monitoring, evaluation and reporting.

Environmental Performance

The commitments and approval conditions for new projects are typically lodged in an environmental management plan (EMP), which establishes how the environmental and social aspects of projects will be managed and how this will be demonstrated by monitoring.

Penalties for environmental management shortcomings are often slow to eventuate, but can be technical, regulatory, financial, political or reputational. Unless management plans operate within a quality system—typically called an environmental management system (EMS)—these shortcomings will accumulate uncorrected, until impacts too serious to ignore break out into the public domain.

An environmental management system stops small problems growing into incidents that hurt people, damage the environment and affect confidence in an enterprise and its operations.

Coffey Environments' services include the following capabilities:

- Environmental management systems which provide, the policy and organisational framework, within which specific management plans can function
- Environmental impact assessment (usually part of the approvals process), from which project-specific management objectives can be set, performance criteria negotiated and monitoring programs designed
- Environmental management plans.



Pollution, Waste and Remediation

A company's reputation depends not only on how it operates today but on how it deals with the legacy issues of the past.

The toxic residues of previous operations remain as environmental or health hazards and require fit-for-purpose clean-up to meet site redevelopment or general environmental criteria.

Coffey Environments' services include the following capabilities:

- Site assessments based on historical records and geophysical, geochemical, hydrogeological and vapour investigations
- Health and ecological risk assessments
- Landfill gas risk assessment
- Environmental site remediation by a range of engineering, chemical, physical, biological or thermal methods
- Due diligence for internal liability estimation, site divestment or acquisition, and redevelopment planning
- Groundwater/water supply and treatment: water supply and permitting, 'zero discharge' planning, total process catchment management, water balance modelling, de-watering, aquifer pumping tests and analyses, groundwater contaminant fate, transport modelling, groundwater remediation, wastewater treatment
- Contaminated land auditing as a voluntary initiative or in response to statutory requirement or a clean-up notice

Environmental Design and Management

Efficient building design and attention to the wellbeing of workers will bring the benefits of improved safety, morale and efficiency.

Coffey Environments' services include the following capabilities:

- Building engineering—mechanical, hydraulic and electrical services; design; documentation and certification of building engineering services; performance analysis; OH&S and legislative requirements; the storage and handling of hazardous materials; laboratory design; hydraulic and sanitary engineering
- Fire safety and risk engineering—audits; risk assessments and design; HAZID; fire modelling; smoke hazard analysis; egress analysis and risk-to-life assessments; fire safety awareness and training; fire detection and suppression systems; dangerous goods assessment and evacuation planning
- Cooling tower/legionella management
- System security and data management.





Energy and Water Management

Efficient energy and water management reduces input costs to business, lowers aggregate resource demand (and hence the cost to other consumers) and defers the environmental impact, cost and political duress of new supply.

Coffey Environments provides services on a range of facilities including warehouses, vehicle workshops, laboratories, hospitals, cultural institutions, defence establishments, police stations, livestock and quarantine infrastructure, embassies and overseas residences, educational facilities and airports.

Coffey Environments has formal accreditation as Registered Building Practitioners, Registered Fire Safety Engineers, Registered Cooling Tower Auditors and Registered Energy Auditors (AIRAH), and as ABGR, NABERS, GreenStar and First Rate Assessors.

Coffey Environments' services include the following capabilities:

- Energy and water auditing, analysis and management planning
- Water savings initiatives and systems design: metering, cooling, stormwater and wastewater
- Utility monitoring—carbon footprint assessment, software and systems, environmental monitoring and reporting programs, energy, water and waste performance reports, data processing and management, carbon management, metering and bill-processing and government energy reporting solutions (National Energy and Greenhouse Reporting (NGER), Energy Efficiency Opportunities (EEO) and Greenhouse Challenge Plus Programme)
- Project management.



Health and Safety

The Occupational Health & Safety (OHS) group provides a diverse range of consultancy, testing and training services to improve the health, safety and wellbeing of the workforce.

The group provides services to a diverse range of clients especially in the Resources, Property, Government, Infrastructure and Maritime sectors.

Coffey Environments' services include the following capabilities:

- Asbestos surveys and sampling including management plans and remediation strategies, accredited by NATA to the international standard for inspections
 - Hazardous material (HazMat) surveys conducted to identify Ozone Depleting Substances (ODS), Lead in Paint, Polychlorinated Biphenyls (PCB) & Synthetic Mineral Fibres (SMF), also accredited by NATA to the international standard for inspections
 - Noise survey and exposure monitoring – identification, assessment of noise sources and levels of exposure with recommendations for noise control
 - Airborne contaminant monitoring – dusts, fibres, fumes, vapours, particles and mists, accredited by NATA to IEC/ISO17025 International standard for calibration and testing laboratories
 - Dust management strategies and control
 - Workplace occupational hygiene surveys – Identifying, evaluating, controlling and monitoring workplace hazards
 - Development and implementation of safety management plans, systems, procedures and policies
 - Safety management system and approved supplier safety audits
 - Illumination surveys, assessment and measurement
 - HVAC industrial ventilation inspections and assessment
 - Whole body and hand arm vibration assessments and monitoring
- Radiation measurement, assessment, control and management
 - Indoor air quality (IAQ assessments and inspections including sick building syndrome (SBS)
 - Bespoke training and awareness sessions for asbestos, dusts and other hazards



OUR SERVICES

GIS and Spatial Data Management

Geographic information system (GIS) technology links spatial information (where things are) with descriptive information (what things are). GIS software generates intelligent digital maps to view and analyse data from a geographic perspective. The unique integration capabilities allow disparate datasets to be combined and compared to illustrate spatial relationships, patterns and connections that are not necessarily evident in any one dataset.

Coffey Environments believes that the use of GIS technology is integral to projects that require a detailed understanding of geographical relationships. A GIS acts as a central repository for all relevant spatial data pertaining to the planning, development and post-construction management of projects.

This repository can be the source of numerous project outputs such as field maps, posters and high-quality report maps. The spatial data can easily be queried to deliver geographic measurements, calculations and statistics as well as for more complex spatial analysis, predictive modelling and 3D visualisation.

Spatial data can be loaded into mobile GIS devices which can be taken into the field to assist with navigation and improve the accuracy and consistency of field data capture.

GIS technology also enables information to be visualised in an online environment and provides a powerful tool for stakeholder engagement.

Coffey Environments GIS and spatial data management services include;

- Needs assessment and strategy
- Project design, management, budgeting, workflow and documentation
- Implementation of small departmental GIS projects through to large enterprise solutions
- Data capture (field surveys, GPS capture, ground photos, digitising, etc.) and data import, editing and manipulation
- GIS publishing : Web map, Google Earth and ArcReader
- 2D spatial analysis : constraints analysis, route/site selection
- Modelling: geographical, geophysical, economic and social – to identify relationships and trends
- 3D spatial analysis : surface analysis (viewshed, hillshade, slope, cut/fill volume, contour) and hydrology and groundwater modelling
- 3D visualisation : perspective views from observer to targets and fly-by animation video
- Training : from basic to advanced, for internal staff and external clients





OUR SPECIALISTS

Coffey Environments employs a wide range of professional, technical and support staff. We are knowledgeable and experienced with a healthy blend of age and gender.

Coffey Environments nurtures excellence and actively assists staff to stay abreast of the latest developments in their profession. Senior staff members are widely acknowledged as the best specialists in their areas of expertise and many have taught at tertiary institutions, conducted research and delivered papers at technical forums and conferences.

We regularly participate in industry forums, standards development groups, review panels and technical advisory bodies and have taken a leadership role in presenting at a number of high profile conferences. Awards and commendations received by Coffey Environments and individuals reflect our high standards.

OUR AWARDS

Coffey Environments has provided exceptional performance and service delivery to projects they have been engaged in. Our awards are attributed to the significant work carried out by our specialists and are a testament to passionately deliver smarter solutions.

2010

- Excellence in Civil Construction, CCF Earth Awards, won by Midland Redevelopment Authority (MRA)
- Coffey Environments was engaged by MRA to deliver environmental consulting advice in groundwater, contamination and river monitoring, preliminary site investigations and remediation plans to the former Western Australian (WA) Government Railway Workshops in Midland
- Best Environmental Consultancy, Highgrade Inaugural Industry Awards, Coffey Environments

2009

- Coffey Environments Western Region HSSE Systems
- Gold Safe Way Achiever Award, Industrial Foundation for Accident Prevention (IFAP)

2008

- The Village at Wellard
- Judges Award, Urban Development Institute of Australia (UDIA)
- chthys Gas Field Development – LNG Plan Project
- Specialist Services Category, Association of Consulting Engineers Australia (ACEA)

2007

- Newhaven
- Judges Award, Urban Development Institute of Australia (UDIA)



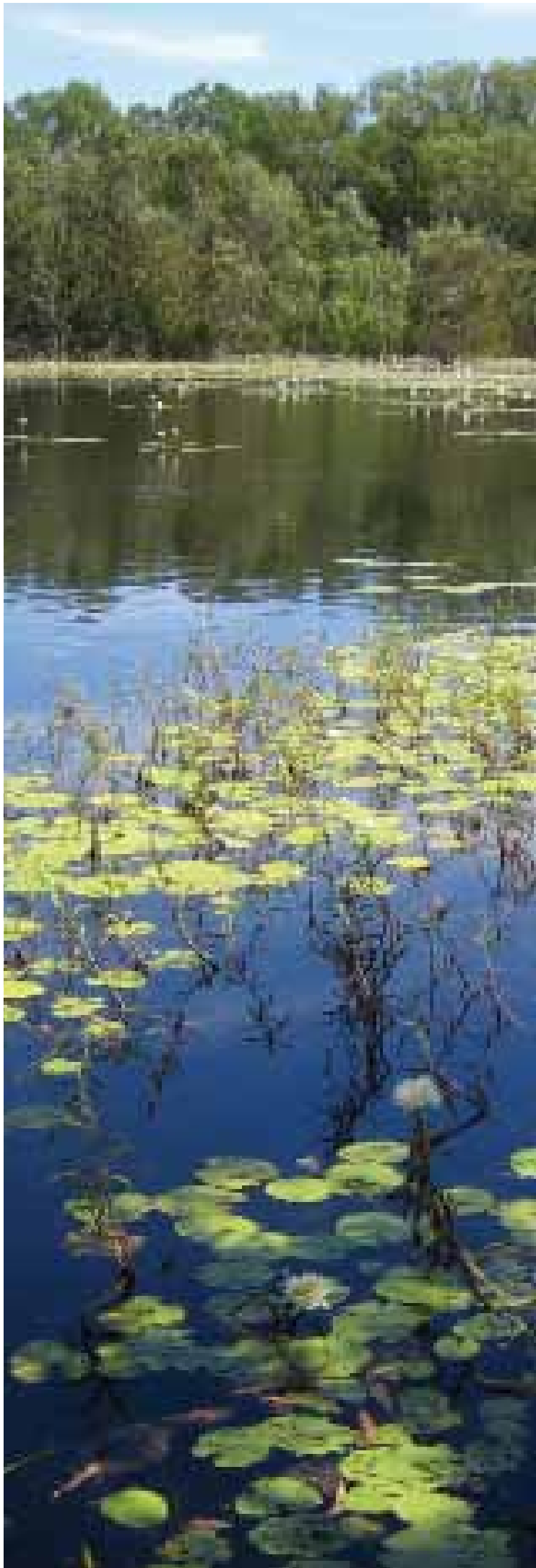
OUR PROJECTS

- Asbestos Surveys and data management: Commonwealth Bank of Australia, Australia
- Asbestos Surveys, Australia: Department of Defence
- Assessment and remediation of phthalate-contaminated soil and groundwater: Nylx Limited, Mentone, VIC (2006 / 2007)
- Contaminated land investigation at Oakey Airfield in South-east : Department of Defence, QLD (2010-on-going)
- Detailed Risk Assessment (DRA) and Remediation Options Assessment (ROA) for the offsite reserve area. The ROA was prepared due to the presence of groundwater contamination located off site and in close proximity to the River Murray: Reliance Petroleum, SA
- Detailed risk assessment and remedial management plan for a site proposed for development as a research facility: Department of Health, SA
- Development of a contamination management strategy for major docklands development of the Wynyard Quarter, Auckland City - in the selected projects section, Sea + City Projects Ltd (NZ)
- Due diligence reviews of manganese mine (1998), tailing dam wall structural stability and hydrogeological assessment, EPBC Act referral (2008), fauna surveys for the Eastern Leases Exploration Drilling Program (2008), environmental permitting advice (2008), GEMCO HSEC Environment Department Secondment (2008-2010), fauna surveys - three species of national environmental significance (i.e., the Northern hopping mouse, Northern quoll and Brush-tailed rabbit rat) across Groote Eylandt (Ongoing), Milner Bay Enhanced Bioremediation Pilot Trial and subsequent planning work (2008 - 2010), Hydrocarbon Remediation Project in Milner Bay (2010 onward): GEMCO, VIC
- Environmental approvals for the Solwara I project in PNG. This is the world's first deep sea mine – mining hydrothermal vents at 1500m off the coast of New Britain (2006-2009), Solwara Deep Sea Mine (PNG): Nautilus Minerals
- Environmental audit of a former manufacturing gasworks site in the business district of the rural city of Horsham: SP Ausnet , VIC, (2005-2009)
- Environmental audit, Assessment and selection of remedial options, Clean up of hotspots, removal and validation of underground fuel storage tanks and pits in remediation plans, Major Projects Victoria: Melbourne Docklands, VIC (2001/2002) and (2007)
- Environmental Impacts Report, Anangu Pitjantjatjara Yankunytjatjara Lands region of the Officer Basin – SA, Australia – AHAVA Energy
- Environmental panel: various environmental services: ETSA Utilities
- Environmental site assessment, including soil and groundwater contamination, Department of Health, SA
- Extractive Mineral Lease Mining and Rehabilitation Program, Kanmantoo Copper Project, SA, Australia, Hillgrove Copper Pty Ltd
- Former Birkenhead terminal: environmental site assessment, in-situ groundwater remediation project active NAPL recovery, detailed risk assessment
- Former Fuel Terminal, Pelican Point: soil and groundwater characterisation/delineation, Remediation action plan, groundwater remediation pilot trials, MPVE remediation system design, build and commissioning.
- Kangarilla and Frank Hilton Reserve Landfill Investigations, Closure Management Plans: City of Onkaparinga
- Kunioon Coal Project (Queensland) – environmental impact assessment and securement of approvals for extension Meandu Mine with DEWHA: Tarong Energy (2007-2009)
- Large scale screening risk assessment, including site history assessment and intrusive soil and groundwater investigations at over 380 locations: Bridgestone Australia Ltd, SA
- Lead environmental consultant, Surat Basin and Bowen Basin Gas Field Developments, as well as for the LNG Plant on Curtis Island. Provision of strategic advice across projects and associated infrastructure, including marine issues and pipelines: Arrow Energy LNG Project, QLD (2008-on-going)
- Management of Environmental Risks, Contamination and Remediation at Mobil Oil Australia's Retail, Supply and Refining Network across Australia (and Pacific): Mobil Oil Australia
- Mining and Rehabilitation Program 2009, Prominent Hill Copper Project, Australia, OZ Minerals, SA
- Numerous operating and former service stations: Environmental Site Assessments, Groundwater assessments, Fuel Storage tank Excavation Remediation and Validation projects, Human Health Risk Assessments, fate and Transport Modelling: Caltex Australia Pty Ltd
- Port Augusta Transcontinental Service Station: groundwater in-situ remediation using MPVE (Multiphase Vacuum Extraction) and Air sparge technologies
- Port Bonython Hydrocarbon Fractionation Plant, Site Contamination Audit on groundwater remediation: Santos Ltd, SA
- Preliminary Investigations, Intrusive Investigations, Remedial Action Plans, On-going Management Plans: Mobil & Caltex, Australia
- Site Contamination Investigations at the Adelaide rail yards: DTEI Adelaide Rail Yards, SA
- Supervision of soil excavation, soil classification and validation during construction at Adelaide rail yards: Hindmarsh Construction Pty Ltd, SA
- Torrens Island Energy Park Environmental and Social Impact Assessment Report, Australia: AGL Energy Limited, SA
- Various commercial / industrial sites: Soil Investigations, Soil classification sampling: Catcon Pty Ltd
- Various commercial/ industrial sites in SA: Asbestos removal / audit projects: Coffey Rail Pty Ltd, SA



OUR CLIENTS

- Adelaide Brighton Cement
- AGL Energy Limited
- AHAVA Energy
- Air Services Australia Ltd
- Alliance Petroleum
- Arrow Energy
- Aspen Group
- Atlas Iron Limited
- Australand Commercial and Industrial
- Bemax
- Beyond 3000
- BHP Billiton
- BHP Nilliton Nickelwest
- Boral
- Bridgestone Australia Limited
- Brisbane City Council
- Burnside Village Pty Ltd
- Calibre Projects Pty Ltd
- Caltex Australia Petroleum Pty Ltd
- Caltex Refineries (NSW) Pty Ltd
- CATCON Constructions Pty Ltd
- CBH Resources
- Centennial Coal
- Centro Property Group
- China Metallurgical Group Corporation (MCC)
- City of Onkaparinga
- Coffey Geotechnics Pty Ltd
- Colliers Ltd
- Commercial and Industrial Property Pty Ltd
- Commonwealth Bank
- CRC Care Pty Ltd
- Daewoo
- Departing of Housing
- Department Environment, Water, Heritage and the Arts
- Department for Transport, Energy & Infrastructure
- Department of Defence
- Department of Health
- Department of Treasury & Finance
- DHS (Vic)
- DSE (Vic)
- Eglinton Estate Pty Ltd
- Electrolux Home Products Pty Ltd
- ETSA Corporation
- Exxonmobil Environmental Services
- Felix Resources (Moolarben Coal Project)
- Fluor and SKM Joint Venture
- Fortescue Metals Group
- Gemco
- Hillgrove Resources Limited
- Hillgrove Resources,
- Hindmarsh
- Iluka Resources
- Ironclad
- Jan de nul Group
- Jemena
- Kalgoorlie Consolidated Gold Mine
- Landcorp
- LEFTA Corporation
- Leighton Contactors Pty Ltd
- LukOil
- Marathon Resources
- Mermaid Marine
- Midland Redevelopment Authority
- Minerals and Metals Group (MMG)
- Mobil Oil Australia Pty Ltd
- Multiplex
- Nautilus Minerals Inc
- Newmont Mining Corporation
- News Ltd
- Offshore Marine Services
- Origin Energy
- OZ Minerals
- Petronas
- Pilbara Iron Company
- Queensland Department of Public Works
- Queensland Rail
- Reliance Petroleum
- Rio Tinto
- Royal Crown Group Pty Ltd
- Santos
- Satterley Property Group
- Sea & City Projects Ltd (NZ)
- Shell Australia
- Shell Iraq Petroleum Development BV
- South East Water (Vic)
- Southcorp Wines Pty Ltd
- SPAusnet
- Spiecapag
- Spotless Services Australia
- Stockland Property Group
- Subiaco Redevelopment Authority
- Sungard Availability Services Pty Ltd
- Suzlon Energy Australia
- Sydney Ports Corporation
- Tarong Energy
- Teck
- Thiess Pty Ltd
- United Group Ltd
- Veolia Environmental Services (Aus) Pty Ltd
- Wallbridge & Golbert Consulting Engineers Pty Ltd
- Waste Services NSW
- Watsons
- Western Power
- Woods Bagot
- Woolworths Limited
- Xstrata Copper Ltd



CONTACT US

AUSTRALIA

Canberra
T +61 2 6162 2622

Newcastle
T +61 2 4016 2300

Sydney
T +61 2 8083 1600

Wollongong
T +61 2 4201 1400

Darwin
T +61 8 8901 1200

Brisbane
T +61 7 3002 0400
T +61 7 3608 2500

Adelaide
T +61 8 7221 3500

Hobart
T +61 3 6108 0100

Geelong
T +61 3 5215 4600

Melbourne
T +61 3 9473 1400

Albany
T +61 8 9892 6400

Dunsborough
T +61 8 9756 9500

Perth
T +61 8 9355 7100

NEW ZEALAND

Auckland
T +64 9 523 5626

PAPUA NEW GUINEA

Port Moresby
T +675 325 2031/325 2032

UNITED ARAB EMIRATES

Dubai
T +971 434 341 72

For a full list of contact details,
please visit us at coffey.com or
email environments@coffey.com

Discover more about Coffey

Coffey is a leading global professional services consultancy focusing on both physical and social infrastructure. We are listed on the Australian Securities Exchange (ASX:COF) and have been operating for over 50 years.



O.R. Tambo International Airport upgrade – Johannesburg, South Africa



Melbourne's Docklands – Australia's largest construction project

Specialist services from concept to completion

We use specialist knowledge to deliver extraordinary outcomes for our clients across the full lifecycle of a project, from concept to completion.

- Coffey Geotechnics
- Coffey Environments
- Coffey Information
- Coffey Mining
- Coffey Rail
- Coffey Projects
- Coffey International Development

A world of experience

We have over 3,000 people helping clients on projects in more than 80 countries, with permanent offices throughout the Americas, Africa, Asia Pacific, Europe and the Middle East. All of our people have one thing in common: a passion to solve emerging challenges to improve the lives of communities.

Visit coffey.com today and find out more about our specialist services



Supporting the Government of Iraq's efforts to rebuild its public management system